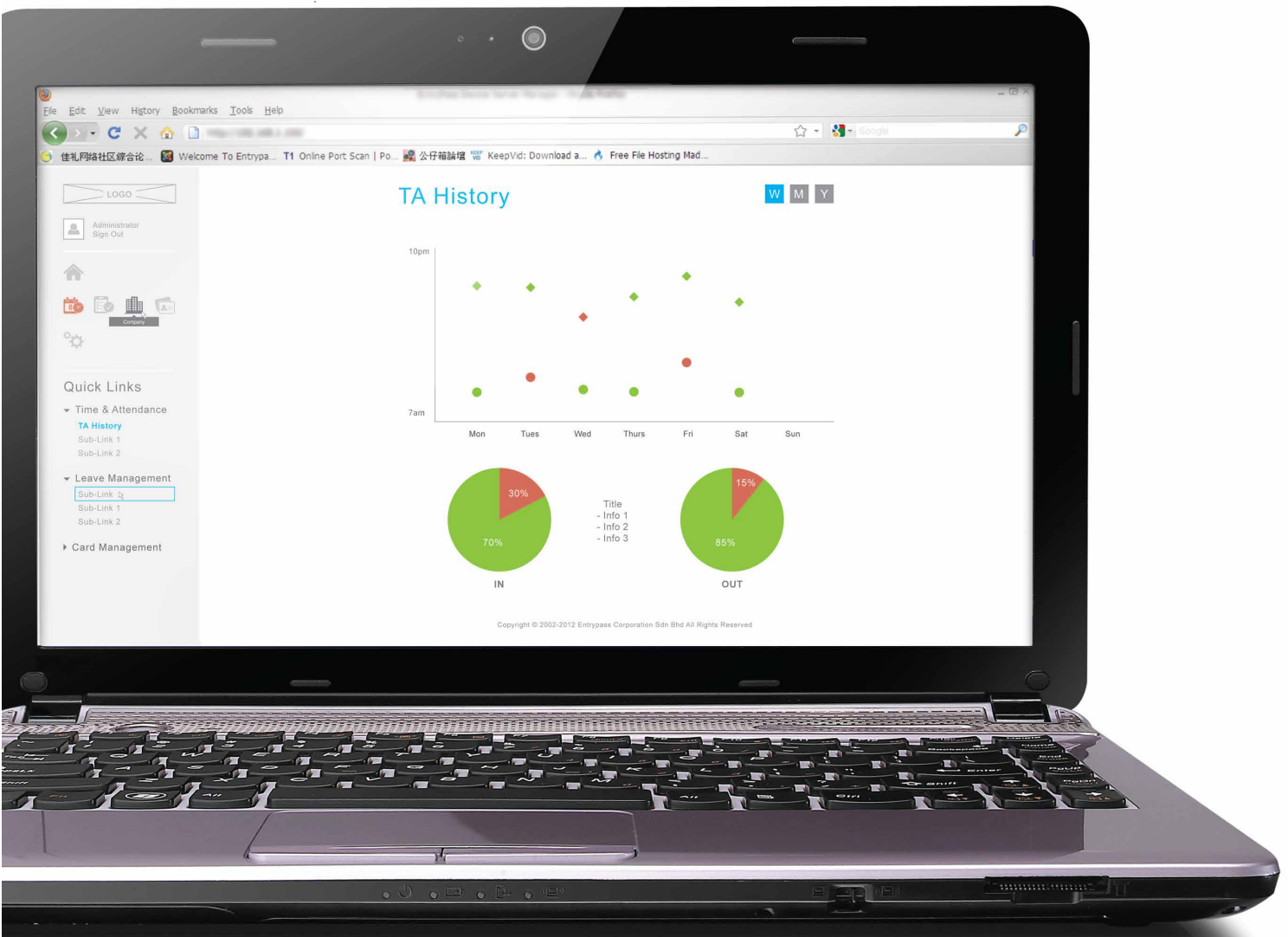


WEB+

P1 Professional Add-on Module



With **Entrypass Web+ Module**, you are able to ultimately reduce operator workload with 24 hours internet access –providing real time access to site security information and enabling monitoring anytime, anywhere in real-time. Entrypass Web+ module also provides site details, logs, reports and response options via standard web browsers like Google Chrome, Mozilla Firefox, Opera or Microsoft Internet Explorer. Time spent generating and sending reports can also be eliminated and tracking an individual's movements in and around the monitored areas would be easier than ever.

Whether you are new to physical access control, whether you need a better and easier way to manage your employee access rights, or you simply looking for ways to save time and money to attain time and attendance data to all your employees or co-workers, Entrypass Web+ Module has been designed to meet this need - enabling user (System Administrator, Time and Attendance Administrator and individual card holder) to easily access the designated data anytime, anywhere in the world.

Feature Highlight

Upgradable Software Module With Virtualization Technologies

Web+ module is distributed with a complete isolated embedded Linux virtual machine that delivers a full-fledged web server, report rendering engine, and many other framework components that can be upgraded via EntryPass. Our Web+ module installation does not require a separate machine. Once setup, it is seamlessly integrated into existing EP.P1.Pro host server, saving you resources.

Secured Network Connectivity

All user access to Web+ are protected with username and password, providing safe access to monitor, control and manage sensitive personnel data, transaction and activities.

Permission-Based Accessibility

Permission-base features accessibility control has been implemented to ensure your manager or supervisor has limited access as permitted by the company. Multi-levels permission-based architecture provides you the flexibility to customize the features accessibility control over the rights they wish to grant to the each individual.

User Dashboard

User dashboard offers a simple view of data associated with employee accounts. Designed to offer each employee transparency and control, day to day time keeping functions are performed automatically.

Management Dashboard

The Management Dashboard provides administrators and managers access to daily administrative functions like edit hours, adding or editing employees related data, generating reports related to the performance and productivity of the workforce. Administrators can also view check-in time, job title of employees and many more.

High Performance Interactive Charting

A new high performance charting library has been implemented with to provide interactive charting capability. The library is written purely in JavaScript, offering complete compatibility with all modern internet browsers. This library does not require client side plug-in like Flash.

Inline Table Editing

Web+ embedded inline table editing capability to provide unparalleled conveniences to users who require regular edits on the record's value. Changing of a value is just a click and edit away, with edited values automatically saved into the respective database.

PC Hardware Requirements

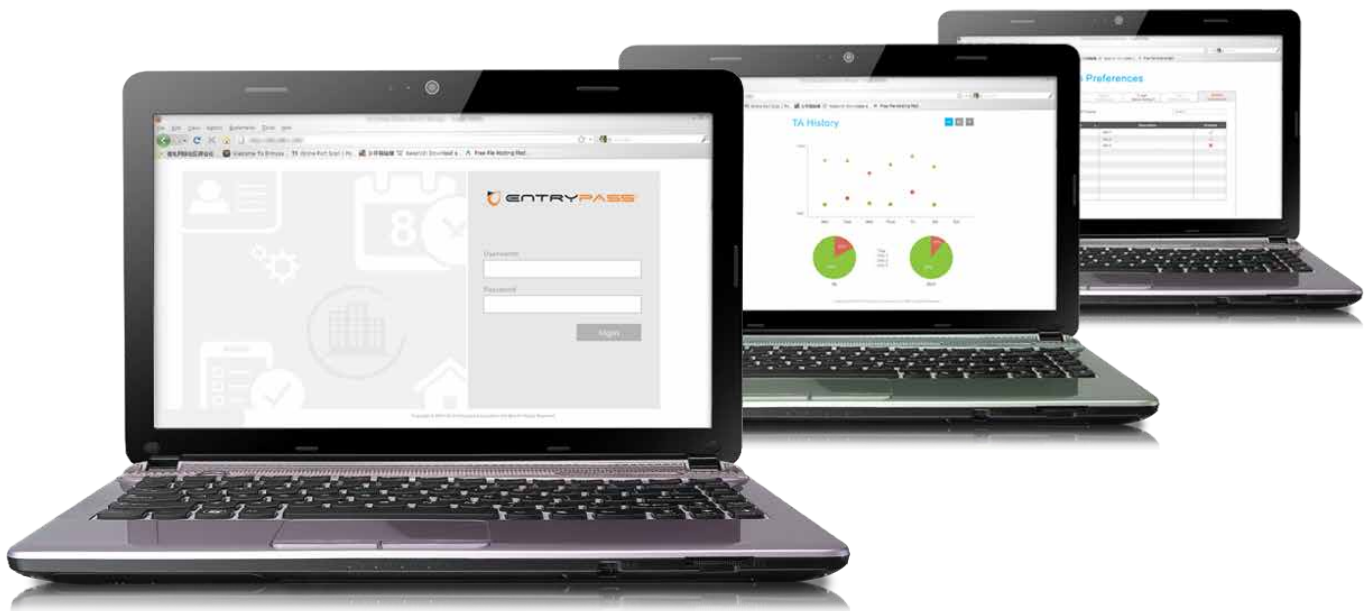
Hardware	Description
Processor	Pentium intel core i5 or i7
Memory RAM	4GB DDR3/1333 ECC
Hard Disk Space	1TB
Operating System	Windows XP Professional
	Windows 2000 Workstation
	Windows 2000 Server
	Windows 2003 Standard Server
	Windows 2003 Advanced Server
	Windows Vista Home Premium
	Windows Vista Business
	Windows Vista Ultimate
	Windows Vista Home Basic
	Windows 7
Optimum Screen Resolution	1920 x 1080
Graphic adapter	1GB DDR5 256bit DC VGA
Media Device	22X DVD+/-RW
Network Device	10/100 Base T Network Adapter
vOptional Peripherals	A sound card to play alerts when an alarm event occurred
	A printer to print reports

Ordering Information

EP.P1.WEB+

Entrypass Platform1 Professional add-on module

WEB+ P1 Professional Add-on Module



www.entrypass.net

Malaysia

No. 40, Jalan TPP 1/10, Taman Industri Puchong, Batu 12 Jalan Puchong, 47160 Puchong Selangor Darul Ehsan, Malaysia.
Tel : +603 8068 1929
Fax : +603 8062 6937
Email : info@entrypass.net

Singapore

No. 1, UBI View, #03-03, Focus ONE Building, Singapore 408555.
Tel : +65- 6841 7242
Fax : +65- 6841 3937
Email : info@entrypass.net

Indonesia

Jl. Raya Lodan No. 2, kompl. Ruko Lodan Centre Blok. P 10, Jakarta Utara 14430, Indonesia.
Tel : +62 21 6983 3153
Fax : +62 21 690 3005
Email : info@entrypass.net

A securityhub group company

