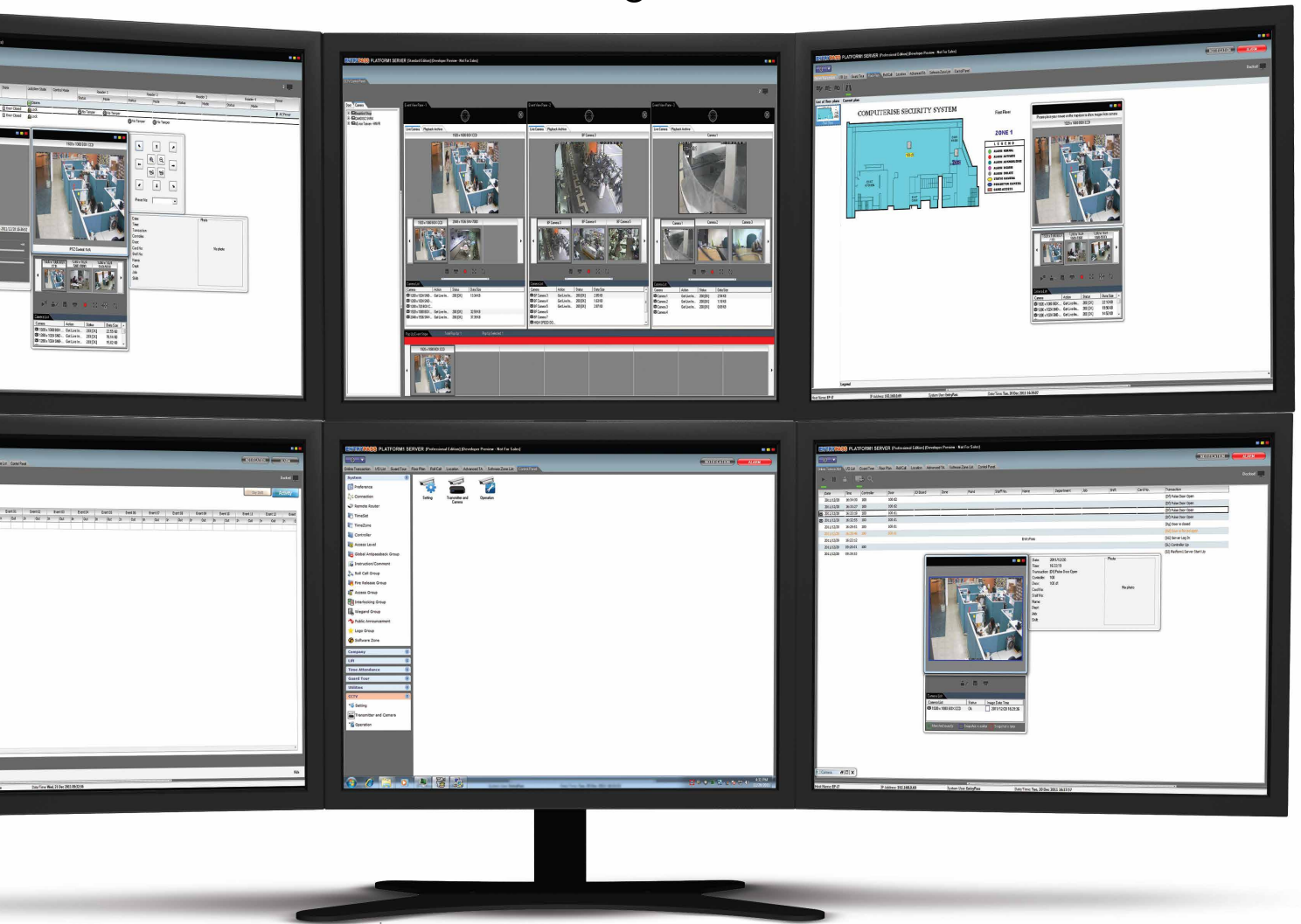


CIM

CCTV Integration Module



EntryPass Platform1 CCTV Integration Module (CIM) is designed to tackle and enhance the capability of the visual inadequate text-based physical access control system. Leveraging the visual data from CCTV system, it is able to provide verification to all event types - benefiting from its integration visually.

The CIM exhibits a framework of monitoring functionalities that is fully event driven, using real time physical access control event occurred within deployment as event marker (valid card entry, invalid card entry, door forced opened, door left opened and many more) to trigger a series of integrated events that enable the operator to quickly locate the event related data within the CCTV system deployed locally or remotely for visual verification purposes – saving you time, and giving you total control over your next course of action, right there and then.

Feature Highlight

Drag & Drop Operation Environment

Introducing a new and improved way to access data - a detachable tabbing system that allows you to span the user interface over to multiple monitors; providing better visibility and seamless information flow from various functionalities. With the powerful drag & drop capability, the operator can radically improve the performance and responsiveness for event management in real time.

Hierarchy Device Listing

The CCTV user interface consists of two device tree lists. The first displays the door list configured with an attached CCTV for integration purposes. The second tree list displays the available transmitter and camera integrated into the CIM. Each of the parent node and sub-node in these two device listing are drag-able for quick review of live and archived video playback.

Event View Pane

3 event view panes allow operator to simultaneously work on events.

Event view pane accepts drag & drop event parameters from other functionalities, enabling video-search and playback. Other event information are also accessible via the sub-tabs.

Other features that operator can perform within the event view pane are:-

- View live video
- Playback archived video content
- View snapshot (if any)
- View event information
- Quick save of current played video frame
- Quick save of current played video
- Print image of current played video frame
- Perform PTZ control (if PTZ camera is configured)

Automated Pop-Up Video Stripe

The video stripe allows you to automatically focus and configure events that require immediate attention in a populated environment.

An occurrence of an event will trigger the interlinked video to dock into the stripe in sequential manner, giving you the power to reconfigure as you see fit.

Interactive Floor Plan

Built within the system, the interactive floor plan channels live and archived video.

Video playback of doors can easily be enabled via the convenient Interactive icon shortcut key.

Take-A-Glance Live Video Playback

This feature enables you to accurately retrieve interlinked camera feed instantly with just a move of the mouse.

PTZ Control

Our CIM allows you to have mouse movement control over a PTZ camera. Sophisticated pan, tilt and zoom can easily be performed with ease. Preset movement can also be set, hassle-free.

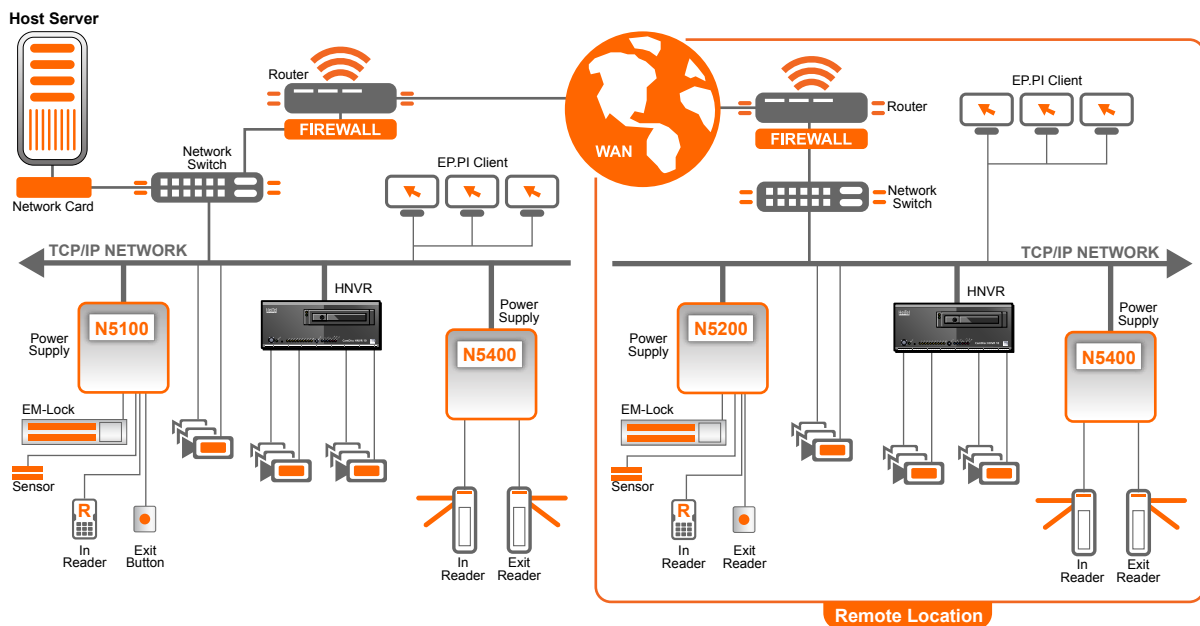
Transaction Searching

Various filters like date, time, card holder, card number, door and transaction types has been made available, allowing you to quickly find the event whenever you wish.

PC Hardware Requirements

Hardware	Description
Processor	Pentium intel core i7 3.4GHz
Hard Disk Space	2TB
Memory RAM	4GB DDR3/1333(min)
Operating System	Windows XP Professional Windows 2000 Workstation Windows 2000 Server Windows 2003 Standard Server Windows 2003 Advanced Server Windows Vista Home Premium Windows Vista Business Windows Vista Ultimate Windows Vista Home Basic Windows 7
Optimum Screen Resolution	1920 X 1080
Graphic adapter	1GB DDR5 256bit DC VGA
Media Device	22X DVD+/-RW
Network Device	10/100 Base T Network Adapter
Optional Peripherals	A sound card to play alerts when an alarm event occurred A printer to print reports

System Diagram



CamDisc SVR 4, CamDisc SVR 10 CamDisc SVR 4s, CamDisc SVR 10s



Digital video transmission system with local long-term recording for 4 or 10 analogue or IP cameras

- Long-term recording onto removable hard disk with adaptive multi-track management for schedule-controlled permanent and motion recording, or contact-triggered event recording
- S-version offers real-time video recording
- Free of charge implementation of hybrid functionality for existing transmitters via remote firmware update
- Hybrid functionality with manufacturer-neutral compatibility for analogue and IP cameras
- Individually adjustable image resolutions up to 720 x 288 pixels and megapixel resolution with IP-cameras
- Integrated Multi-Unicast server supporting multiple IP network connections and simultaneous dial-up
- connections Integrated Web server for up to 4 IP-connections, enabling video transmission and camera control on a PC/Smartphone/ Handheld using standard Web browser
- HTconnect enables unrestricted, but safe access over the Internet to Firewall protected video systems (also with dynamic IP-addresses) in private nets. Additionally HTconnect controls permanently the availability of the entire system from public net over private net to video transmitters
- Camera position authentication and camera specific alarming of video loss with analogue cameras
- Up to 5 privacy zones per analogue camera, configurable for live images or live and recorded images
- Integrated email client for alarming up to two email addresses
- Integrated email client for alarming up to two email addresses
- Precise recording of pre and post alarm images, individually adjustable to camera and event
- Event-triggered connections by alarm contact, motion detection (depending on type of IP cameras), serial command, technical alarm, and routine call
- Perfected for alarm verification and conformity with monitoring centre applications
- Integrated interfaces for Ethernet network, PTZ control, data transmission, and system integration
- Network interfaces in conformity to VdS Germany to integrate within alarm systems based on the "VdS 2465 for Video" protocol
- Data transmission via USB interface
- Extensive remote control functions to control lighting, barriers, alarms, doors, or any relay-controlled devices
- Compact design, suitable for desk, wall and 19" mounting
- Multi-criteria evaluation of recordings via IP and/or dial-up connection, or in offline mode, via PC caddy
- Live video transmission and simultaneous playback and recording (Triplex)
- Optional, bidirectional audio transmission and recording onto removable hard disk
- Optional camera-selective recording of cash register-/cash machine-/filling station-/access control-/scanner-data, timesynchronised with video recording

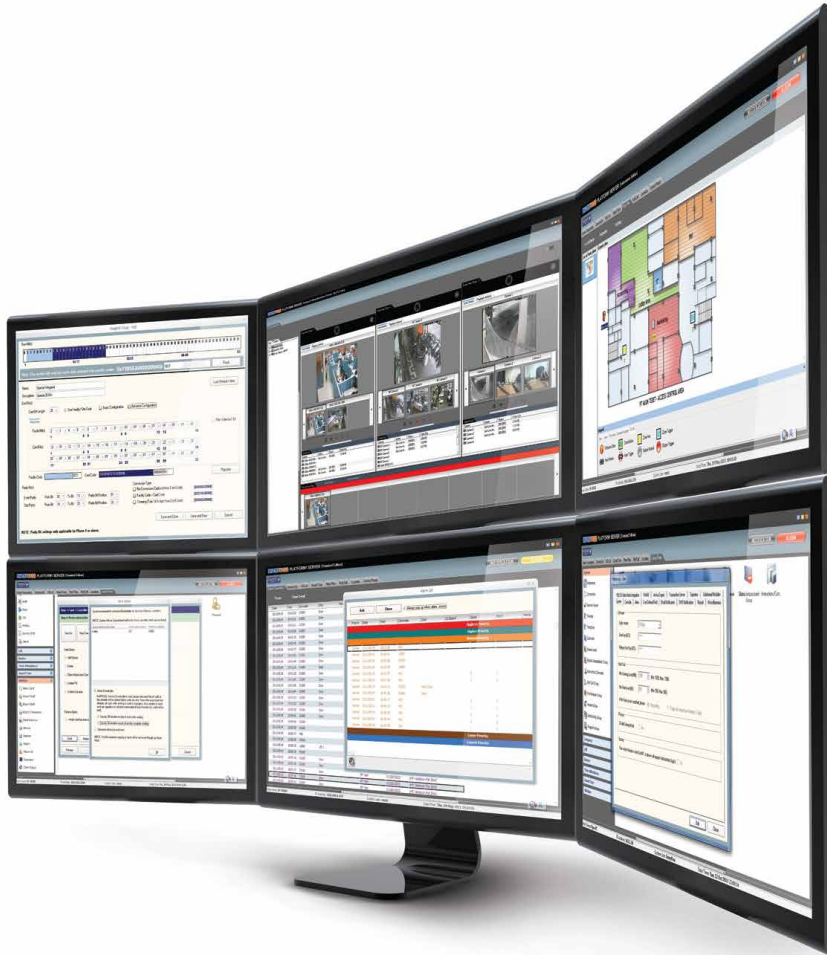
CamDisc HNVR 10



Hybrid video transmission with long-term recording for mixed operation of up to 10 analogue and IP cameras

- Specifications based on established CamDisc SVR series
- Prepared for integration of current and future IP cameras from a wide range of manufacturers
- Cost-optimised hardware design thanks to optional connection of analogue cameras using HYBRID Card 4
- Support of megapixel resolution
- Low network load even when using megapixel cameras thanks to HTcompress®
- Complete and unlimited compatibility with HeiTel receiver equipment for classical monitoring centre applications
- Manufacturer independent transmission of IP camera video streams to central monitoring stations
- Physically and functionally decoupled network connections reduce IP camera generated network load
- Recording onto integrated removable hard disk drive
- Network-based control of significant IP camera functions including PTZ function
- Network interfaces in conformity to VdS Germany to integrate within alarm systems based on the "VdS 2465 for Video" protocol
- Product design specifically developed for security applications: fast, compact and easy to integrate

CIM CCTV Integration Module



www.entrypass.net

Malaysia

No. 40, Jalan TPP 1/10, Taman Industri Puchong, Batu 12 Jalan Puchong, 47160 Puchong Selangor Darul Ehsan, Malaysia.
Tel : +603 8068 1929
Fax : +603 8062 6937
Email : info@entrypass.net

Singapore

No. 1, UBI View, #03-03, Focus ONE Building, Singapore 408555.
Tel : +65- 6841 7242
Fax : +65- 6841 3937
Email : info@entrypass.net

Indonesia

Jl. Raya Lodan No. 2, kompl. Ruko Lodan Centre Blok. P 10, Jakarta Utara 14430, Indonesia.
Tel : +62 21 6983 3153
Fax : +62 21 690 3005
Email : info@entrypass.net

A securityhub group company

